

UNITED STATES PUBLIC LAND SURVEY CORNER CERTIFICATE FOR

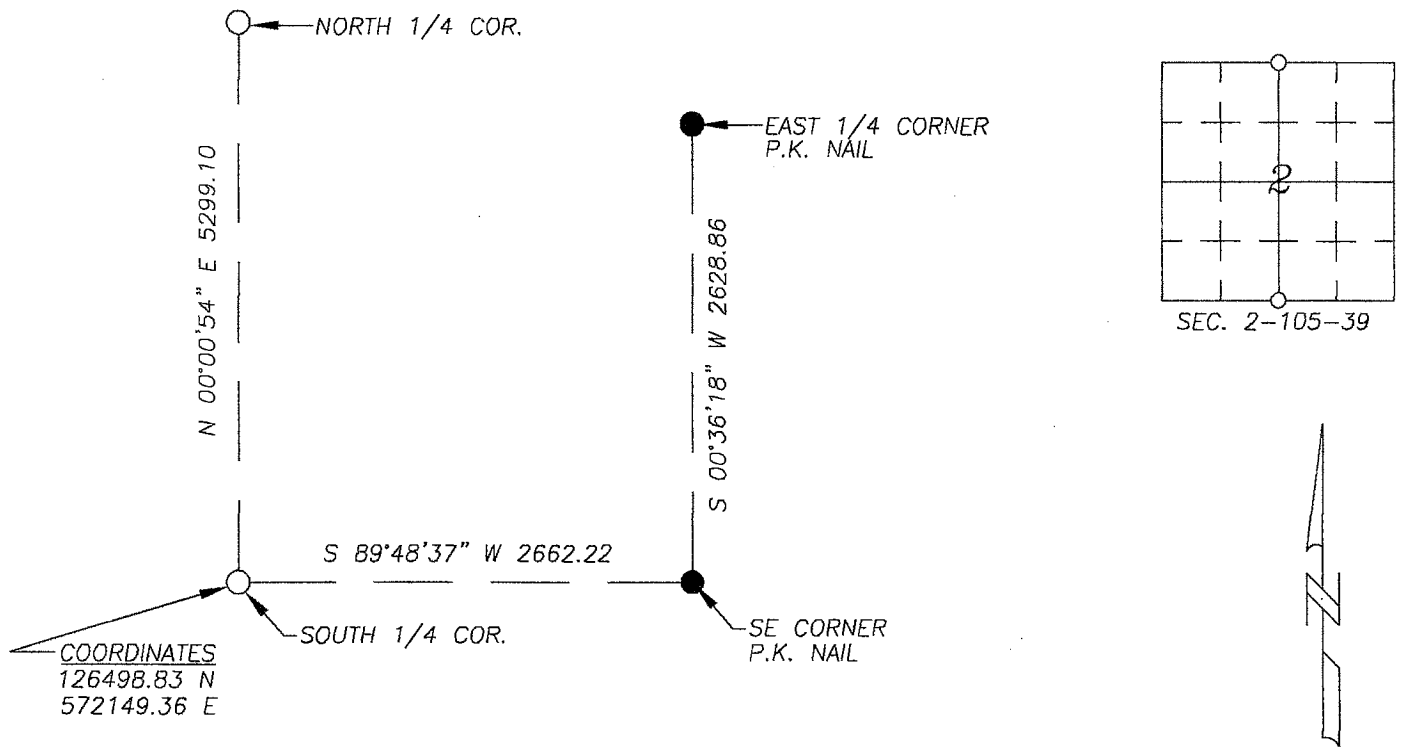
Land survey monuments situated in Section 2, Township 105 North, Range 39 West, of the Fifth Principal Meridian, Murray County, Minnesota..

Previously recorded in N/A in County Recorder's Office.

(Show reason for preparing this certificate, the evidence and detailed procedure used in establishing the corner position & monumentation found or placed.)

MONUMENT DESCRIPTION AND REMARKS: North 1/4 Corner - excavated with backhoe and found a 10" X 6" stone in the centerline of road 1.4 feet deep, placed 5/8" Iron stake with yellow survey cap number 23008 over top center of stone. South 1/4 Corner - excavated with backhoe and found a 10" X 8" stone in the centerline of road 2.2 feet deep, placed 5/8" Iron stake with yellow survey cap number 23008 over top center of stone. Murray County Highway Department had no history on either of these corners.

MURRAY COUNTY COORDINATES MAD 83, 2007 **PLAN-VIEW**



I hereby certify that this land surveying document was prepared and related survey work was performed by me or under my direct supervision and that I am a duly licensed Land Surveyor under the laws of the State of Minnesota.

Perry L. Zieske 7-10-12
 Signature Date
 Perry Zieske
 License number 23008

Corners to be Indexed

Corners	Section	Township	Range
NORTH 1/4	2	105N	39W
SOUTH 1/4	2	105N	39W